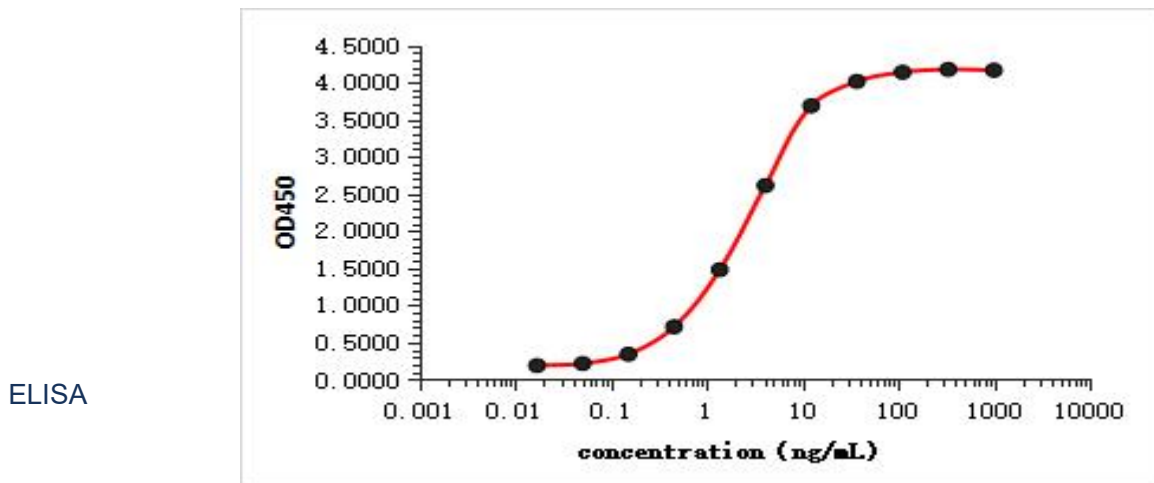
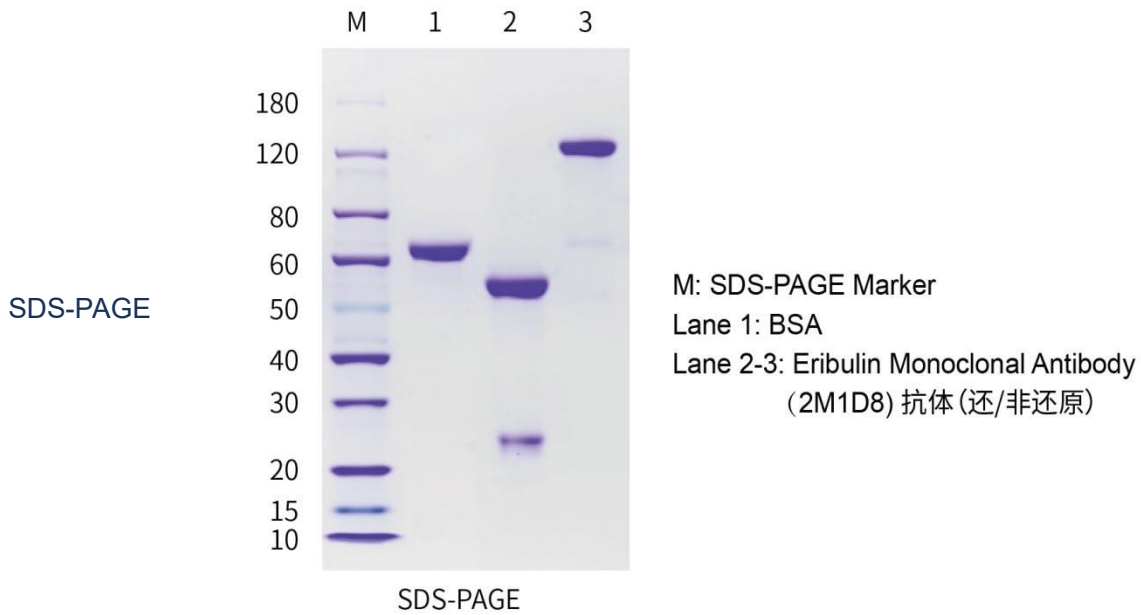


Anti-Eribulin Monoclonal Antibody

Cat.No: DTA0032

DESCRIPTION

Name	Anti-Eribulin Monoclonal Antibody
Host Species	Rabbit
Immunogen	Eribulin-BSA
Clone Number	2M1D8
Subtype	IgG
Conjugate	Non-conjugated
Action path	Antibody-drug Conjugate/ADC Related
Purification method	Protein G purified
Purity	>90% as determined by SDS-PAGE
Buffer solution	10mM PBS, pH7.4
Storage method	Please pack the antibodies into appropriate packaging (recommended per use) and store them in a -80 °C freezer to avoid repeated freezing and thawing.
Application	ELISA 0.1-1 µg/mL Other applications User -optimized
Background	Eribulin is a cell microtubule dynamics inhibitor and a soft sponge like anti-tumor drug. ADC loaded with eribulin has a strong bystander effect and good clinical efficacy. Due to the release of payload after ADC administration, there is an increase in unbound payload and changes in ADC composition (i.e. DAR distribution). In order to address the challenges and difficulties in ADC drug PK analysis, a high-quality and high affinity anti eribulin payload antibody can be used for ADC PK detection and DAR value analysis, which helps evaluate ADC efficacy, assess payload exposure at target sites, and is crucial for providing overall evaluation such as ADC stability.



EC50=2.610 ng/ml

Pre coated with BSA Eribulin small molecule protein (2 ug/well) on Elisa plates, then added with continuously diluted anti Eribulin Monoclonal Antibody solution, washed, and incubated with secondary antibody for Elisa reading. Based on the above data, the EC50 for the binding of anti Eribulin Monoclonal Antibody to BSA Eribulin small molecule protein is 2.610 ng/ml.

感谢您选择德泰生物，我们竭诚为您服务！

For Research Use Only